

---

# Screw Terminal (M3 x 96)

## EPD-96A User's Guide

### CONTEC CO.,LTD.

---

Thank you for purchasing the EPD-96A Screw Terminal.

The product is a general purpose terminal fastened with screws, which relays the I/O wirings of CONTEC interface board/card or card with a 96-pin half-pitch connector.

The pins in connector correspond to their respective terminals on the terminal strips on a one-to-one basis, allowing you to easily connect the board/card to an external device via the terminal strips.

Note: To connect a board/card to the accessory, you need the separately priced option cable.

## Features

- Up to 96 signal lines can be connected.
- A signal line from an external device can be connected to the terminal simply by using screws.
- Equipped with the "Spring-up" type terminal to prevent the terminal screws from being lost.
- The optional cable can be used to connect easily to the board/card.
- Optimized configuration of board wiring.
- Signal banks can be mounted on DIN rails.

## Product Configuration

This product is configured as follows. Be sure you have received all of the components listed. If any components are missing or broken, contact the store where you purchased this product.

Your registration card is essential for us to notify our customers of new products. Be sure to fill it out completely and return it.

- EPD-96A main unit...1
- User's Guide (this document)...1



### CAUTION

The option cable is not appended to the interface board/card and this product. Cable differs according to board/card used. Be sure to check the manual or visit the CONTEC's Web site to buy an appropriate one.

---

## External View and Dimensions

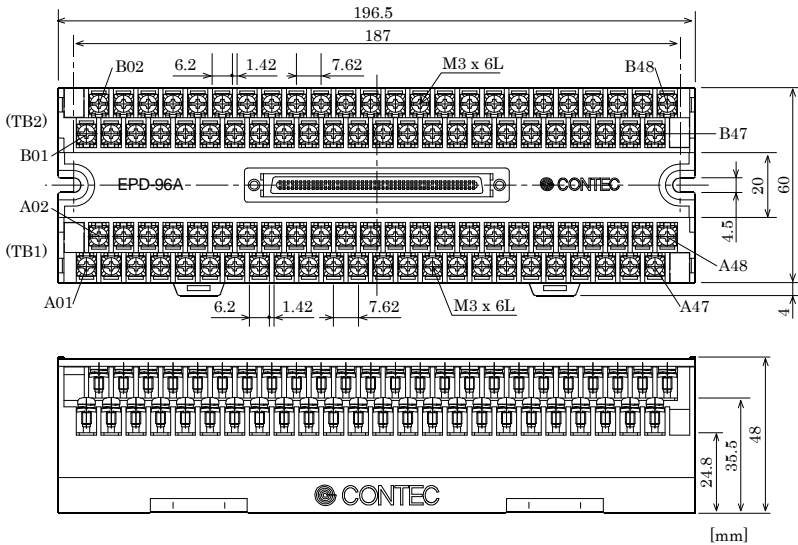


Figure 1. External View and Dimensions

## EPD-96A Connections

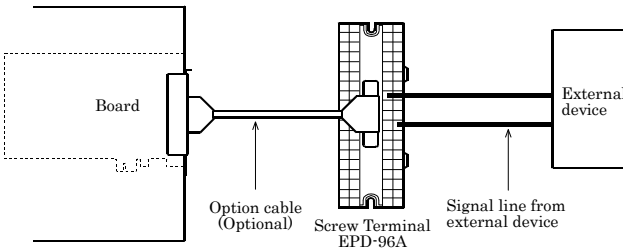


Figure 2. EPD-96A Connections

- (1) Connect the interface board/card and the terminal unit using the separately available option cable.
- (2) Identify the destination for connection on the terminal unit and connect the signal line from the external equipment. You can provide connection easily just by tightening the screws.

# Wiring Diagram

Terminal No.	Connector Pin No.	Terminal No.
A01	48	B01
A02	47	B02
A03	46	B03
A04	45	B04
A05	44	B05
A06	43	B06
A07	42	B07
A08	41	B08
A09	40	B09
A10	39	B10
A11	38	B11
A12	37	B12
A13	36	B13
A14	35	B14
A15	34	B15
A16	33	B16
A17	32	B17
A18	31	B18
A19	30	B19
A20	29	B20
A21	28	B21
A22	27	B22
A23	26	B23
A24	25	B24
A25	24	B25
A26	23	B26
A27	22	B27
A28	21	B28
A29	20	B29
A30	19	B30
A31	18	B31
A32	17	B32
A33	16	B33
A34	15	B34
A35	14	B35
A36	13	B36
A37	12	B37
A38	11	B38
A39	10	B39
A40	9	B40
A41	8	B41
A42	7	B42
A43	6	B43
A44	5	B44
A45	4	B45
A46	3	B46
A47	2	B47
A48	1	B48

Figure 3. Wiring Diagram

## Specifications

**Table 1. Specifications**

Item	Specification
Rated insulative voltage	125VAC rms, 125VDC
Rated current	1A
Compatible wiring	1.25mm <sup>2</sup> (Max.) (stranded)
Insulative resistance	500VDC 1000MΩ or later (Between terminals/ Relative to earth)
Voltage resistance	500VAC 60Hz One minute (Between terminals) 1000VAC 60Hz One minute (Relative to earth)
Connector	PCR-E96MD+ (mfd. by HONDA) equivalent
Compatible rail	35mm (wide) DIN rail
Operating conditions	0 - 50°C, 10 - 90%RH (no condensation)
Weight	480g

### CAUTION

- CONTEC will bear no responsibility for any problems, etc., resulting from modifying this product.
- Do not strike or bend the product. Otherwise, the product may malfunction, overheat, cause a failure or breakage.
- The foreign body (the metal piece, the combustible, and liquid, etc.) must not touch the product. Otherwise, the product may malfunction, overheat or cause a failure.
- The specifications of this product are subject to change without notice for quality improvement. Even when using the product continuously, be sure to read the manual and understand the contents.
- Regardless of the foregoing statement, CONTEC assumes no responsibility for any errors that may appear in this document or for any results of using the product.
- Brand and product names are trademarks of their respective holder.
- All relevant issues have been considered in the preparation of this document. Should you notice an omission or any questionable item in this document, please feel free to notify CONTEC CO., LTD.

Copyright 2006 CONTEC CO., LTD. ALL RIGHTS RESERVED.

**CONTEC CO., LTD.**

January 2013 Edition

3-9-31, Himesato, Nishiyodogawa-ku, Osaka 555-0025, Japan

Japanese <http://www.contec.co.jp/>

English <http://www.contec.com/>

Chinese <http://www.contec.com.cn/>

A-51-268 (LYGH083)

01112013\_rev3 [07122006]

No part of this document may be copied or reproduced in any form by any means without prior written consent of CONTEC CO., LTD.